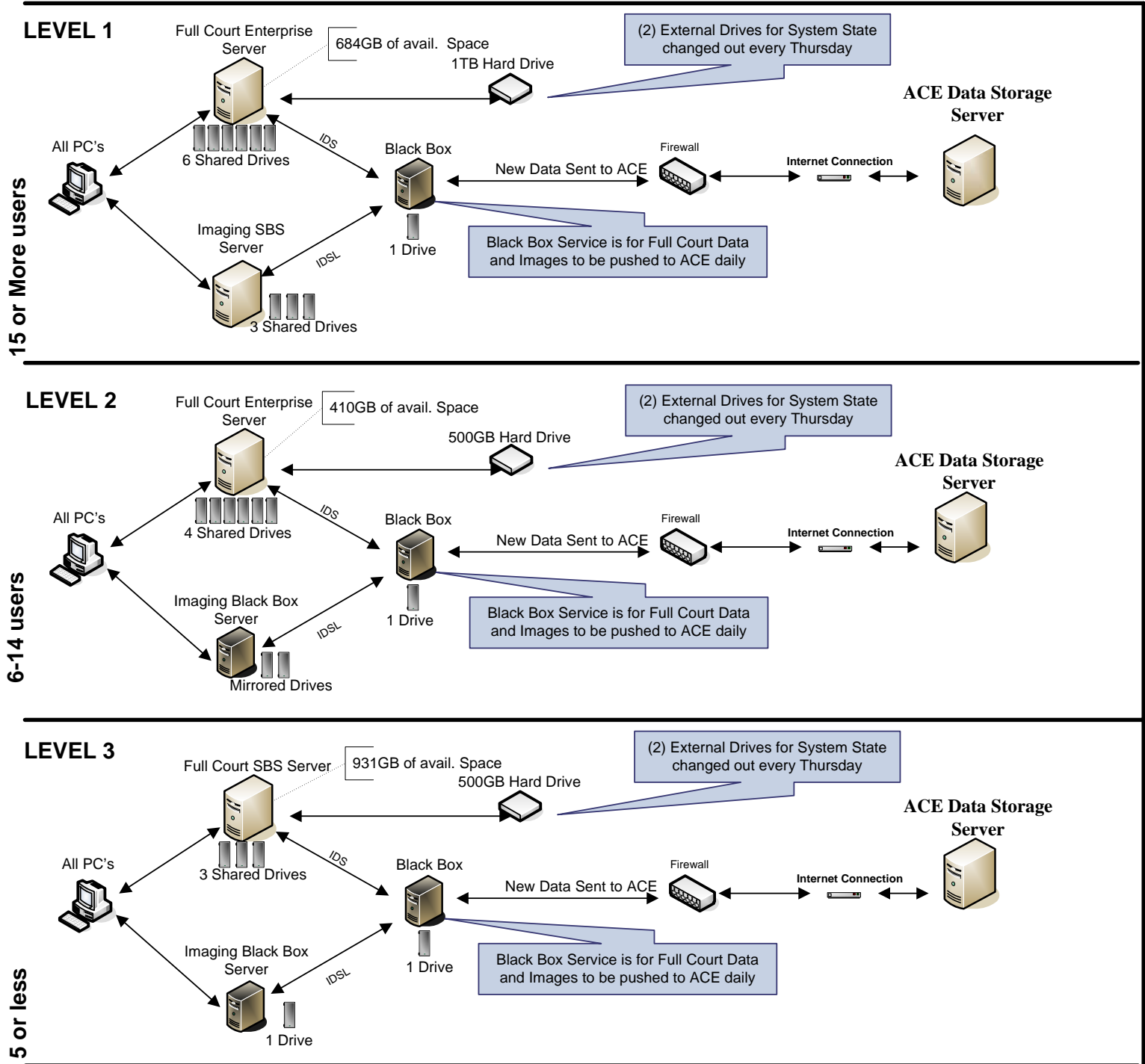


5/11/10

Recommended Server and Backup Configuration



Enterprise Server

Specifications:
2 Intel Quad Core Processors
4GB DDR3 ECC Memory
Adaptec 4 Channel RAID Card
(6) 147GB SAS
Redundant 750W Power Supply

Small Business Server

Specifications:
Intel X3430 Processors
4GB DDR3 ECC Memory
Adaptec 4 Channel RAID Card
(3) 500GB SATA
Redundant 800W Power Supply

Black Box

Specifications:
Intel Atom 330 Processors
1GB DDR2 Memory
500GB SATA*
120W Power Supply
*May have 2 Mirrored Drives

NOTES:

- * Every Server should have an appropriate sized Battery Backup (UPS).
- * System state is a backup of all system settings, data and user profiles